

**CID**

Carbostent & Implantable Devices

INTERVENTIONAL CARDIOLOGY

EFFICACY FREE FROM LIMITS

**CFRE 8**<sup>TM</sup>

AMPLIMUS<sup>TM</sup> ELUTING CORONARY STENT

**ART**  
ABLUMINAL RESERVOIR TECHNOLOGY

The only very effective polymer-free DES

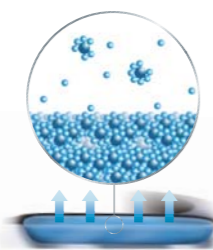
## Polymer-free Platform

CID's exclusive technology eliminates the renowned drawbacks associated to polymers.



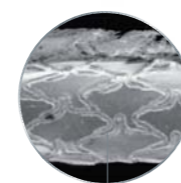
**ART**  
*Abluminal Reservoir Technology*  
Controlled and directed drug elution.

Targeted elution



**Amphilimus™ Formulation**  
*Formulated Sirolimus with an organic acid*  
Optimal efficacy through sustained drug elution, modulated bioavailability and raised homogeneous drug distribution.

Maximized product efficacy



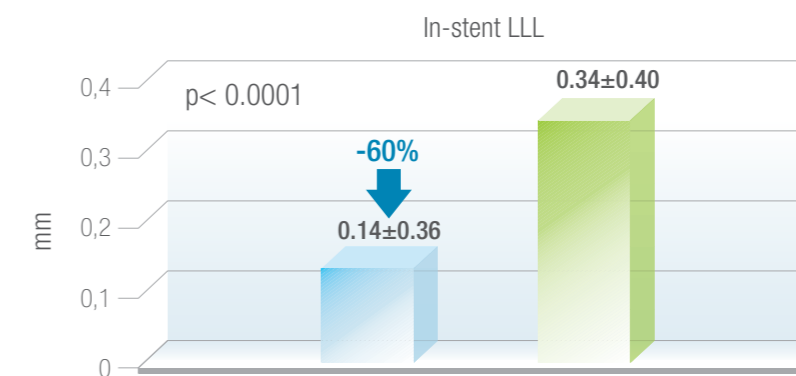
**BIS**  
*Bio Inducer Surface*  
Accelerated endothelialization and strut coverage.\*

Optimal hemocompatibility vs lumen blood flow

\* Pig coronary artery at 7 days.

The NEXT study  
6-month angiographic data

■ Cre8™ (148 les, 141 pts)  
■ TAXUS™ (145 les, 135 pts)



Cre8 is superior to Taxus



AMPHILIMUS™ ELUTING CORONARY STENT

## Technical data

### Coronary stent

- Polymer-free drug release device
- Stent material = L605 Cobalt Chromium alloy
- Abluminal reservoirs for drug loading
- Strut surface coating = Bio Inducer Surface (Carbofilm™)
- Strut thickness = 80µm
- 2 radiopaque platinum markers at stent ends
- No stent foreshortening during expansion

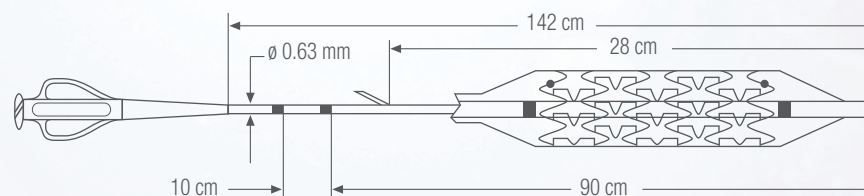
### Drug releasing formulation

- Amphilimus™ formulation = Formulated Sirolimus with an organic acid

### Device specifications

- Guiding catheter compatibility = 5F (0.058")
- Guidewire compatibility = 0.014"
- Nominal Pressure (NP) = 9bar
- Rated Burst Pressure (RBP) = 18bar
- Average Burst Pressure (ABP) = 24bar

### Delivery system



### Ordering Information

Size \ Length	12mm	16mm	20mm	25mm	31mm
2.5mm	ICLI2512	ICLI2516	ICLI2520	ICLI2525	-
2.75mm	ICLI27512	ICLI27516	ICLI27520	ICLI27525	-
3.0mm	ICLI3012	ICLI3016	ICLI3020	ICLI3025	ICLI3031
3.5mm	ICLI3512	ICLI3516	ICLI3520	ICLI3525	ICLI3531
4.0mm	ICLI4012	ICLI4016	ICLI4020	ICLI4025	ICLI4031
4.5mm	ICLI4512	ICLI4516	ICLI4520	ICLI4525	ICLI4531

Please contact your local sales representative for product availability

NOT FOR SALE IN USA AND JAPAN



Manufactured by: CID S.p.A.  
Strada per Crescentino, sn - 13040 Saluggia (VC) Italy  
www.cidvascular.com

